

Sale Sports Club
Tennis Section



Members' Handbook

2009 - 2010

www.salesportsclub.com

INTRODUCTION

Sale Tennis Club is a private club and exists as a section within Sale Sports Club. The Sports Club offers other sporting options including hockey, cricket and rugby union, and members wishing to avail themselves of these facilities can choose to join the club as multi-sport members for a small incremental fee. The club enters several men and women's teams into the North Cheshire and South West Manchester leagues, and there are always opportunities for members to represent the club, whatever your level of skill and experience.

The courts were resurfaced during November 2007, and we now have six courts with excellent playing surfaces. Please look after them.

The section is always in need of help to run the club, so if you feel that you can spare the time to get involved in making the club a success please do so, either by taking a place on the committee, or less formally (e.g. helping to organise social events). We are keen to build up our junior section to help promote tennis in the area and to ensure the future of the club. Please try and help out with this initiative in any way that you can, e.g. by helping to supervise junior coaching sessions.

The club is always in need of cash to maintain the courts etc. so do your best to participate in social events and club tournaments, and the committee would like to encourage all members to maximise the use of the bar facilities—as well as providing income to the club it's a great way to build up a good team spirit and a friendly and welcoming atmosphere. We also ask all members to make a special effort to make new and prospective members feel welcome at the club.

Tony Roberts, Chairman.



COURTS AVAILABILITY

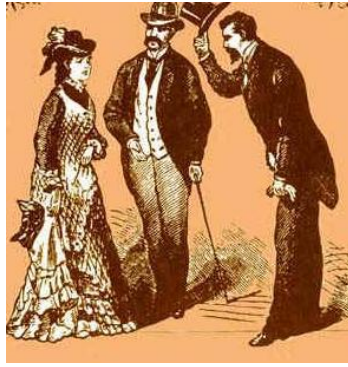
Refer to the guidance notes posted on the club notice boards for detailed information on the availability of courts. The following notes summarise the main points:

- League match fixtures and club tournaments take priority.
- The courts are reserved for club social tennis on Saturday and Sunday afternoons, and Monday evenings. During these periods members are required to join in the social tennis by playing doubles. Members wishing to play prearranged singles or doubles matches should arrange to play at times that do not conflict with these sessions.
- The Saturday afternoon social session is open to all members aged 16 or over, regardless of ability. The format should be mixed doubles wherever possible. This session is primarily about socialising with other members.
- Sunday afternoons are for “fun tennis”. That is to say, all ages, all abilities.



- Monday evening “club night” is intended for more competitive tennis, for senior members who are able to play to a reasonable standard.
- The club coach has priority on the hard courts before 18:00 on weekdays and on Saturday mornings.
- Junior members may use the Astroturf courts until 18:00, after which time they will be reserved for senior and intermediate members. The exception to this is that juniors have access to the Astroturf courts on Saturday mornings before 14:00, and Sunday evenings after 18:00.
- Courts do not need to be booked. Other than the above restrictions members are free to use the courts at any other times on a “first come, first served” basis, between the hours of 09:00 and 22:00.
- Outside of the summer league season, team captains will also arrange evenings for match practice for team players.
- Members wishing to use the floodlights should purchase tokens from behind the bar inside the clubhouse. The tokens are used in the meters sited inside the rear vestibule of the club. Remember to purchase tokens in advance in case the bar is not open when you wish to play.

CODE OF CONDUCT



1. Please show consideration at all times for other users of the club facilities and local residents.
2. Do not leave any litter on the courts. Use the bins provided. Please dispose of any litter that you find in order to preserve the appearance of the courts.
3. Smoking on the courts is forbidden. Cigarette ends can cause irreparable damage to the courts.
4. The courts must not be used for any other purpose than tennis, e.g. playing football, riding of cycles is not allowed.
5. The tennis nets and net cords are expensive items of equipment and must not be misused, e.g. by sitting on the cord, which causes stretching.
6. Members must ensure that all the court gates are kept locked after use. If you have opened the court padlocks on the Astroturf courts please check that any remaining players have a key to re-lock the gates before you leave. Failure to follow these instructions significantly increases the risk of vandalism to the courts. Members must also ensure that the gates on courts 4, 5 & 6 accessed via combination locks are kept shut at all times.
7. Suitable footwear is required for use on the courts to prevent damage to the playing surface. Football boots, walking boots, high-heels, etc. are not allowed.
8. The club does not enforce a strict adherence to the wearing of white tennis clothes, but members should wear only valid sports attire when playing. The wearing of jeans etc. is not acceptable. Members representing the club by playing in league matches should take particular care to ensure that they wear only recognised tennis wear. When playing matches at other clubs, members must ensure that they comply with the dress code of that club - if in doubt, wear whites.
9. Show consideration for players on other courts. Try not to distract other players when play is in progress, e.g. by walking across the back of another court to retrieve a stray ball or to reach another court. Wait until the ball is no longer in play.
10. When a cricket match is in progress on the square, avoid walking along the external fence of the courts when the bowler is delivering the ball as this can distract the bowler and batsman. Wait until the ball is no longer in play, and then move quickly across the line of sight of the players.

LEAGUE TENNIS

- Summer league matches (in both women's and men's leagues) require six players per team organised into three doubles pairs ranked 1 to 3. Each pair will play two sets against each of the opposition pairs in rotation, i.e. a total of 18 sets per match.



- Winter league matches require two women and two men. The first rubber consists of two sets of women's doubles and two sets of men's doubles. The second rubber consists of two sets of mixed doubles, i.e. 8 sets in total.
- Home teams must provide the match balls, 3 per court. The club secretary will provide match balls for home fixtures to captains at the beginning of each season.
- Captains must ensure that all players are eligible to play for specific teams. The leagues have rules that do not allow "recognised" members of higher teams to play for teams in lower divisions. The rules can be quite complex so please read the league handbooks carefully, and if in doubt contact the league secretary for clarification. Failure to comply can result in fines and deduction of points.
- Team captains are responsible for the completion and return of scorecards to the relevant league secretary. The leagues can be very strict about poorly completed scorecards and may impose fines, so always use capital letters and include first names and not initials.
- Captains should ensure that all members wishing to play league tennis get a chance to represent the club at an appropriate level.
- Team captains should collect match fees from each player to contribute towards the costs of match balls, league registration, and the provision of a meal or refreshments after home fixtures. For summer league fixtures, the minimum match fee is £3.00 per player (home and away), and winter league fees are £1.50 per player. At the end of the season, captains should pay £6 per summer league match, and £3 per match for winter league, into club funds. The additional money collected should be used to fund meals and refreshments provided for home fixtures.
- It is customary in the North East Cheshire summer league to buy a round of drinks for the visiting team after the match. Funding arrangements for this are in addition to the £3.00 match fees.



ACCESS TO THE COURTS AND CLUBHOUSE

Members are able to access the courts via the gate to the three hard courts, which is secured by a combination lock. The Astroturf courts can be reached via the internal connecting gate between court 3 and court 4. Always shut the gate behind you and ensure that the lock has engaged.



Team captains are provided with keys to the padlocks to the gates on the Astroturf courts. Key holders are responsible for ensuring that the gates are locked after play has completed. If you have unlocked the gate it is your responsibility to lock it again before you leave, or make sure that someone else on court is going to do it for you.

BRITISH TENNIS MEMBERSHIP

All members are encouraged to register with the LTA's British Tennis Membership scheme (www.lta.org.uk/britishtennismembership). The number of members that the club has registered affects the allocation of tickets for the Wimbledon Championships (see below).

WIMBLEDON TICKETS



The club receives a limited allocation of pairs of tickets for the Wimbledon Championships tournament each year from the British LTA. These tickets are made available for members to purchase at face value. Allocation of tickets will be via a lottery draw held during the tennis section Annual General Meeting in the spring. Members must be present at the AGM in order to enter the draw and it is an LTA requirement that these tickets can only be purchased by registered British Tennis members (see above).

Members who obtain tickets must attend the tournament in person and must not sell or transfer the tickets to third parties. If a member no longer requires the tickets they have been allocated they must be made available to other members - a reserve list is drawn as part of the lottery for this purpose.

COACHING

An LTA qualified tennis coach provides coaching at the club, with discounted rates for members. Members wishing to organise individual or group coaching should contact the coach directly (see Key Contacts section for details). Payments are made directly to the coach. In addition to private coaching, the club will be arranging a group coaching sessions for junior members, including mini-tennis for the younger players, so please check the club notice boards for details, or contact Alex Moore.





MEMBERSHIP SUBSCRIPTIONS



- Annual membership subscriptions are due on the 1st April each year.
- All members must ensure that their club subscriptions are paid promptly at the beginning of each season. A discount will be given to senior members who renew their subscriptions before the end of April.
- A joining day and doubles tournament (normally a Saturday or Sunday) will be arranged and publicised each season when members can come down to the club and pay their subscriptions in person, and take part in the tournament. All members are encouraged to attend this day if possible.
- Members who have paid their subscriptions will be provided with a club membership card and a shoe tag as proof of membership. Shoe tags should be worn at all times when using the courts.
- Members are permitted to invite guests to play at the club on an occasional basis (maximum 4 times per year), but guests who are playing regularly will be expected to become paid-up members if they wish to continue using the club facilities.
- A number of different membership options are available, including seniors, juniors, families etc. Check the club website at www.salesportsclub.com for a full list of the current options and to download a membership form.
- All members, both new and existing, are required to complete a membership application form so that the latest address and contact details (both telephone and email) can be held on the membership database. Contact information will be made available to team captains in order to enable them to organise teams for league fixtures, and email is an efficient and cost-effective mechanism for contacting members with club news etc.
- Parents of all junior members need to sign a Parent's Undertaking form, confirming that they understand the conditions of the club membership, and that they will be responsible for ensuring that their children comply with the club's code of conduct.

COMMITTEE MEMBERS AND KEY CONTACTS



Tony Roberts

Chairman



0161 972 0836



atroberts@talktalk.net

Kevin O'Neill

Secretary



01663 762676



kevin.oneill1@tesco.net

John Graves

Membership and Treasurer



0161 282 5147



john.graves@bigfoot.com

Alex Moore

Junior Section and Club Development



0161 374 1044



alexandra_boyle@hotmail.com

Joe Holt

Grounds Rep



0161 969 2016



joe.holt01@ntlworld.com

Alan Herron

Communications and Marketing



07960 018890



ah@thisistruenorth.co.uk

Jarek Dabros

Coach



07917 548101



jarekdabros@yahoo.com

